



Please dispose of packaging for the product in a responsible manner. It is suitable for recycling. Help to protect the environment, take the packaging to the local amenity tip and place into the appropriate recycling bin.

Wheel Removal Trolley



03640

*FOR HELP OR ADVICE ON THIS PRODUCT PLEASE CONTACT YOUR DISTRIBUTOR,
OR SIP DIRECTLY ON:
TEL: 01509500400
EMAIL: sales@sip-group.com or technical@sip-group.com
www.sip-group.com*

Please read and fully understand the instructions in this manual before operation. Keep this manual safe for future reference.

DECLARATION OF CONFORMITY

Declaration of Conformity

We

SIP (Industrial Products) Ltd
Gelders Hall Road
Shepshed
Loughborough
Leicestershire
LE12 9NH
England

As the manufacturer's authorised representative within the EC
declare that the


Wheel Removal Trolley - SIP Part. No. 03640

Conforms to the requirements of the following directive(s), as indicated.

2006/42/EC Machinery Directive

And the relevant standard(s), including:

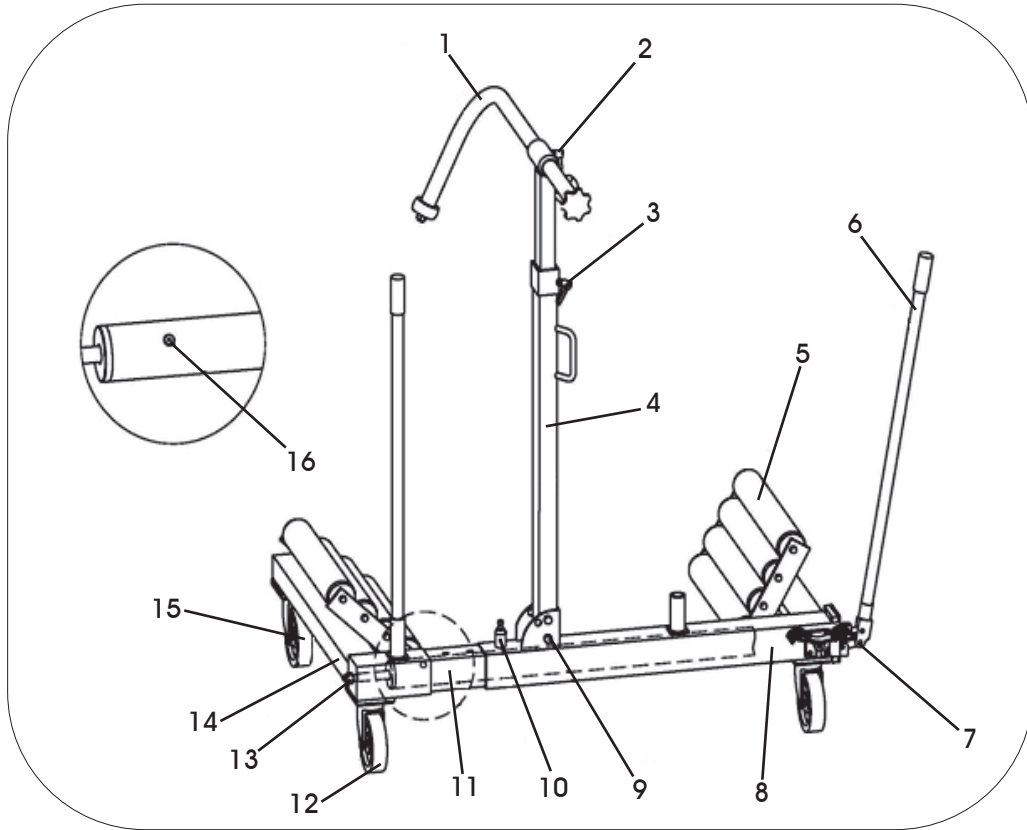
EN 1494:2000+A1:2008
EN 121000:2010

Signed: 

Mr P. Ippaso - Managing Director - SIP (Industrial Products) Ltd
Date: 29/10/2014.



EXPLODED DIAGRAM



CONTENTS

Page No.	Description
4.	Safety Symbols Used Throughout This Manual
4.	Safety Instructions
6.	Guarantee
7.	Contents and Accessories
7.	Technical Specifications
8.	Getting to Know Your Wheel Removal Trolley
9.	Assembly Instructions
10.	Operating Instructions
11.	Maintenance
13.	Troubleshooting
14.	Exploded Diagram & Parts List
15.	Declaration of Conformity

Ref. No.	Description	SIP Part No.	Ref. No.	Description	SIP Part No.
1.	Wheel Support Arm	HY01-00550	9.	Pin	HY01-00557
2.	Lock handle	HY01-00551	10.	Lock pin	HY01-00558
3.	Lock handle	HY01-00551	11.	Inner frame	HY01-00559
4.	Support arm	HY01-00552	12.	Castor (with brake)	HY01-00560
5.	Roller table	HY01-00553	13.	Nut M14	HY01-00561
6.	Handle	HY01-00554	14.	Left frame	HY01-00562
7.	Valve block assembly	HY01-00555	15.	Castor (without brake)	HY01-00563
8.	Right frame	HY01-00556	16.	Oil fill bung	HY01-00564

SAFETY SYMBOLS USED THROUGHOUT THIS MANUAL



Danger / Caution: Indicates risk of personal injury and/or the possibility of damage.



Note: Supplementary information.

SAFETY INSTRUCTIONS



IMPORTANT: Please read the following instructions carefully, *failure to do so could lead to serious personal injury and / or damage to the Wheel Removal Trolley.*

When using your wheel removal trolley, basic safety precautions should always be followed to reduce the risk of personal injury and / or damage to the wheel removal trolley or load.

Read all of these instructions before operating the wheel removal trolley and save this user manual for future reference.

The wheel removal trolley should **not** be modified or used for any application other than that for which it was designed.

It was designed for the removal and mounting of larger wheels.

If you are unsure of its relative applications do not hesitate to contact us and we will be more than happy to advise you.

Before operating the wheel removal trolley always check no parts are broken, that no oil is leaking and that no parts are missing.

Always operate the wheel removal trolley safely and correctly.

KNOW YOUR WHEEL REMOVAL TROLLEY: Read and understand the owner's manual and labels affixed to the wheel removal trolley. Learn its applications and limitations, as well as the potential hazards specific to it.

KEEP CHILDREN AND UNTRAINED PERSONNEL AWAY FROM THE WORK AREA: All visitors should be kept at a safe distance from the work area; never allow untrained persons to operate the wheel removal trolley.

STAY ALERT: Always watch what you are doing and use common sense.

NEVER LEAVE THE WHEEL REMOVAL TROLLEY UNATTENDED: When in use / under load.

HAVE YOUR WHEEL REMOVAL TROLLEY REPAIRED BY A QUALIFIED PERSON: The wheel removal trolley is in accordance with the relevant safety requirements. Repairs should only be carried out by qualified persons using original spare parts, otherwise this may result in considerable danger to the user and void the warranty.

MAINTENANCE...cont

BLEEDING

- ⇒ Loosen the oil fill bung.
- ⇒ Insert the handle into the pump handle base.
- ⇒ Place the foot pedal in the neutral position.
- ⇒ Pump the handle about 10 times, this will purge the air out of the system.
- ⇒ Refit the oil fill bung.

TROUBLESHOOTING

The following table lists the common operating issues with problems and solutions. Please read the form carefully and follow it.



If any of the following symptoms occurs during your operation, stop using the wheel removal trolley immediately, or serious personal injury could result. Only a qualified person or an authorised service centre should perform repairs on the Wheel removal trolley.

FAULT	POSSIBLE CAUSES	REMEDIES
Frame will not extended fully.	<ul style="list-style-type: none"> • Low on oil. 	<ul style="list-style-type: none"> • Refill with oil.
Will not operate.	<ul style="list-style-type: none"> • Foot pedal in a neutral position. • Filled with too much oil. 	<ul style="list-style-type: none"> • Foot pedal must be position 'A' or 'B' • Check and remove some oil.



Note: Repairs should be carried out by a qualified person.

MAINTENANCE...cont

ADDING OIL

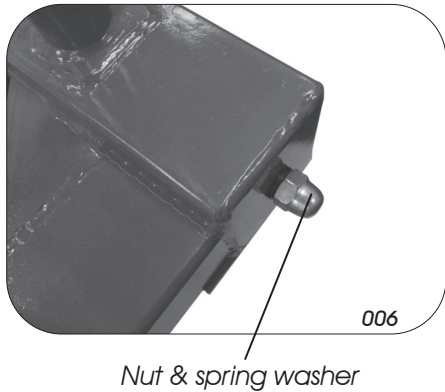


Note: When refilling with oil, the unit must be fully pumped apart before the oil fill plug can be removed, otherwise there is a risk of excess pressure in the oil reservoir which can cause oil to squirt out when the oil fill plug is loosened.



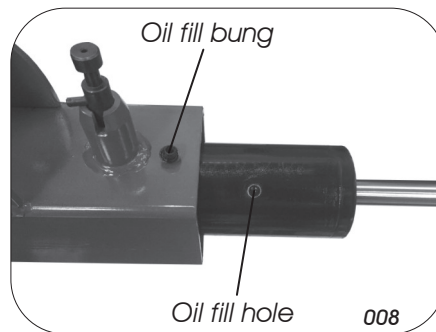
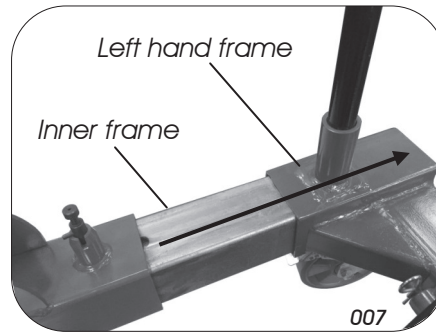
Recommended Oil: ISO 15
Oil Capacity: Around 1000ml

- ⇒ Remove the nut and washer from the end of the ram piston (006).
- ⇒ Prop the right hand side frame with a piece of wood or similar.
- ⇒ Remove the left hand side frame and the inner frame (007).



- ⇒ Fully extend the hydraulic ram.
- ⇒ Remove the oil fill bung on the hydraulic ram, fill with hydraulic oil through the oil fill hole, until the oil reaches the top of the oil chamber (008).

- ⇒ Wipe away any excess oil.
- ⇒ Refit the oil fill plug.
- ⇒ Refit the frame and inner frame.
- ⇒ Refit the nut and washer.



SAFETY INSTRUCTIONS...cont

DANGER! Check that the wheel removal trolley is in sound condition and good working order; Take immediate action to repair or replace damaged parts.

WARNING! Only operate on a level and stable surface and never use on soft ground where the wheel removal trolley is likely to "sink" whilst in operation.

NEVER STAND ON THE WHEEL REMOVAL TROLLEY: The wheel removal trolley is not designed for this purpose.

DO NOT dismantle or tamper with the wheel removal trolley, as this may be dangerous and will invalidate the warranty.

- If a problem with the wheel removal trolley is experienced or suspected stop using the wheel removal trolley **immediately** and contact your distributor for repair.
- Never work under the wheel removal trolley whilst in operation.
- Regularly inspect, clean and lubricate the wheel removal trolley, ensuring that it is in good working order and condition.
- Always ensure that the work area is clean and tidy, free from unrelated materials and has adequate lighting.
- Keep hands, limbs etc. clear of moving parts during operation of the ram.
- **DO NOT** top-up the wheel removal trolley with brake fluid, or other oil types; use hydraulic oil only.
- Ensure that there are no persons or obstructions beneath the wheel removal trolley whilst its in operation.
- Clean the wheel removal trolley correctly, **DO NOT** leave it extended.
- Failure to follow the warnings in this manual, may result in personal injury and/or property damage.
- Prior to applying the load, be sure that the brakes on the castors are fully secure.
- Components of this wheel removal trolley are specially designed to withstand the rated capacity. Do not substitute bolts, pins, or any other components.
- Before operating, check for signs of cracked welds, loose or missing bolts, or any other structural damage. Do not operate if any of these conditions exist. Have repairs made only by authorised service centre.
- Due to various applications, it is your responsibility to always use adequate guards, such as eye protection and heavy protective clothing, when operating this wheel removal trolley.
- Do not stand in front of the work area where the load is applied.
- If the wheel removal trolley appears to be damaged in any way, is found to be badly worn, or operates abnormally **IT SHOULD BE REMOVED FROM SERVICE** until necessary repairs are made by an authorised service centre.
- **DO NOT** use the wheel removal trolley to move wheels which are bigger than the maximum wheel size.
- Understand the operating environment; Before each use the operator should assess, understand and where possible reduce the specific risks and dangers associated with the operating environment. Bystanders should also be made aware of any risks associated with the operating environment.

SAFETY INSTRUCTIONS...cont



Danger / Caution: Never exceed the maximum size of the wheel, overloading can lead to personal injury or damage to the wheel removal trolley.



CAUTION: The warnings and cautions mentioned in this user manual can not cover all possible conditions and situations that may occur. It must be understood by the operator that common sense and caution are factors which cannot be built into this product, but must be applied.

GUARANTEE

This SIP Wheel Removal Trolley is covered by a 12 month parts and labour warranty covering failure due to manufacturers defects. This does not cover failure due to misuse or operating the wheel removal trolley outside the scope of this manual - any claims deemed to be outside the scope of the warranty may be subject to charges including, but not limited to parts, labour and carriage costs.

This guarantee does not cover consumables such as oil, etc.

In the unlikely event of warranty claims, contact your distributor as soon as possible.



Note: Proof of purchase will be required before any warranty can be honoured.

OPERATING INSTRUCTIONS...cont

⇒ Press the foot pedal to the 'B' position, now lift the wheel by pumping the handle, when the wheel is in position on the wheel removal trolley use the lock pin to secure it.



Note: Ensure that lock pin is secured through the nearest location hole on the inner frame. This prevents unintentional lowering of the wheel while it is being handled.

- ⇒ Place the handle into the handle socket on the frame, this will make it easier to move the wheel removal trolley.
- ⇒ Undo the brakes on the castors.
- ⇒ The wheel can now be safely moved away on the wheel removal trolley.



Danger / Caution: Prior to moving the wheel removal trolley, make sure that the wheel is fully secured by the wheel support arm with the lock pin in the locked position, the roller tables must be as low as possible whilst still allowing clearance between the wheel and the floor.

UNLOADING THE WHEEL



Danger / Caution: Before unloading the wheel removal trolley, make sure the wheel is located on the wheel studs and secured with the wheel nuts, or if the wheel has been moved to a place for storage the wheel can be released.

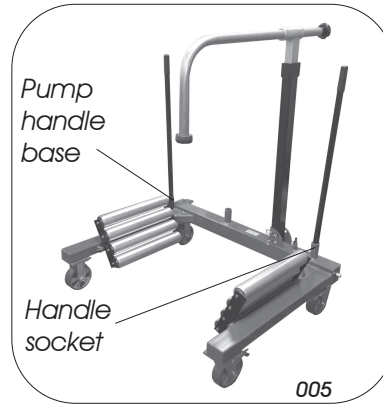
- ⇒ Loosen the wheel support arm.
- ⇒ Lift the lock pin up so its in the open position.
- ⇒ Press the foot pedal to the 'A' position and use the handle to pump open the frame.
- ⇒ Move the wheel support arm out the way and remove the wheel removal trolley.

MAINTENANCE

- ⇒ Periodically check the wheel removal trolley frame to make sure all bolts are tight and inspect for cracked welds, bent, loose, or missing parts.
- ⇒ Periodically check the hydraulic connections for possible leaks, replace or properly repair damaged or leaking hydraulic components before use.
- ⇒ Change hydraulic oil in the hydraulic system every 100 working hours, or more frequently in unusual dirty or dusty areas.
- ⇒ If the paint becomes badly chipped, it is suggested to repaint the press. This will prevent rusting.

ASSEMBLY INSTRUCTIONS...cont

⇒ Fit one handle into the pump handle base and the other into the handle socket (005).



OPERATING INSTRUCTIONS

LIFTING THE WHEEL



Danger / Caution: Before using the wheel removal trolley, make sure the vehicle is on the correct weighted axle stands and is safe to work on.

- ⇒ Pull the lock pin up to unlock the frame, press the foot pedal to the 'A' position.
- ⇒ Pump the handle to open the frame, until the roller tables are in the correct position for the wheel.
- ⇒ Raise the height adjustment arm and wheel support arm so its slightly higher than the wheel.
- ⇒ Push the wheel removal trolley underneath the wheel so both roller tables are under each side of the wheel, and the wheel is resting on the support arm.
- ⇒ Lock the 2 castors by applying the brake.
- ⇒ Place the wheel support arm over the rear of the wheel, adjust it so the wheel is in a vertical position and can be moved 5 cm side to side, now lock the wheel support arm by tightening both locking handles on the height adjustment arm and wheel support arm.



Note: This will allow the wheel to be rotated in the wheel removal trolley when relocating the wheel studs.



Danger / Caution: The height adjustment arm and wheel support arm are only used to balance the wheel, they are not designed to take the load of the wheel.

CONTENTS & ACCESORIES

Frame	Support Arm	Wheel Support Arm
Height Adjustment Arm	Roller Table (x2)	Castor (with brake x2)
Castor (without brake x2)	Handle (x2)	Roller Table Shaft (x2)
Pin (x2)	Spring Washer 10mm (x16)	R-Clip (x4)
M10 x 17 Bolt (x16)		



Note: If any of the above are missing or damaged, contact your distributor immediately.

TECHNICAL SPECIFICATIONS

<i>Maximum Load</i>	1500kg
<i>Minimum Wheel Diameter</i>	1000mm
<i>Maximum Wheel Diameter</i>	2200mm
<i>Maximum Wheel Width</i>	800mm
<i>Roller Length</i>	490mm

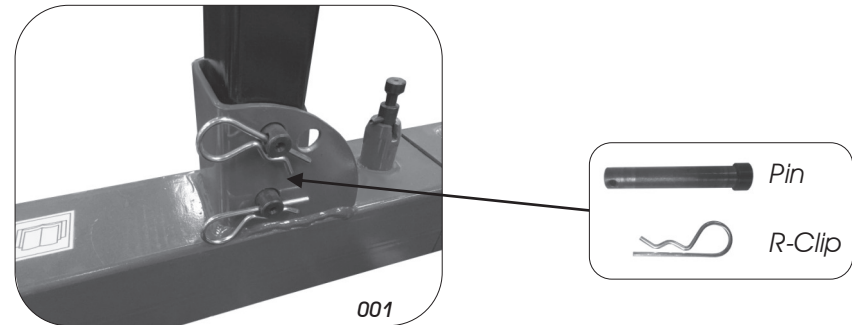
GETTING TO KNOW YOUR WHEEL REMOVAL TROLLEY



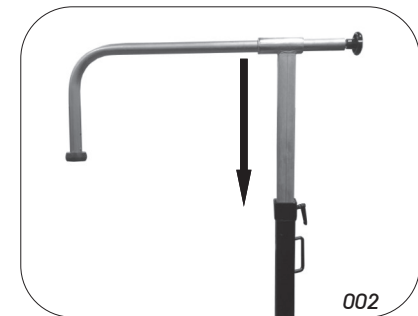
Ref. No.	Description	Ref. No.	Description
1.	Wheel Support Arm	6.	Foot pedal
2.	Height Adjustment Arm	7.	Handle Socket
3.	Support Arm	8.	Lock Pin
4.	Roller Table	9.	Castor
5.	Handle		

ASSEMBLY INSTRUCTIONS

- ⇒ Fit all four castors to each side of the frame, by using the M10 x 17 Bolt (x16) and 10mm spring washer (x16).
- ⇒ Fit the support arm into the bracket on the frame, secure with the two pins and the two r-clips (001).



- ⇒ Slide the height adjustment arm down the support arm (002).



- ⇒ Slide the roller table shaft slightly through the fixed bracket on the inside of the frame, then place the roller table between the two fixed brackets, slide the roller table shaft through the rear of the roller table and then through the other fixed bracket, secure by using one r-clip, repeat for the other side of the frame (003 & 004).

